

FULLY
FEATURED

THE WORLD'S MOST STYLISH WINDOW
FULLY FEATURED PVC-U WINDOWS & DOORS



NEW ENERGY EFFICIENT FORMULA



LOCKMASTER®



FULLY FEATURED PROFILE STYLISH AND ENERGY EFFICIENT

Our Fully Featured window has an Ovolo beading both on the inside and outside. The profile is available in 5 different wood effect finishes with wood effect on both faces or wood effect with white combinations and white as standard, with a choice of optional hardware.



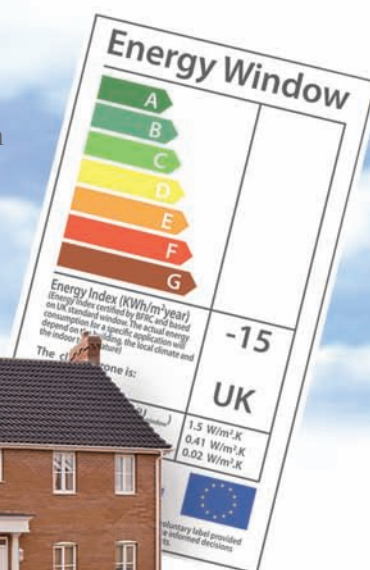
SPECIFICATION

- High impact, multi-chamber construction
- Internally beaded for optimum security
- Profiles made from lead free material using zinc/calcium and organic stabilisers
- Optimum thermal design ensures no complicated modifications to achieve any WINDOW ENERGY RATING
- Every window and door is precision made to your order

UNDERSTANDING WINDOW ENERGY RATINGS

New regulatory measures are being introduced to help improve energy efficiency in buildings. Window Energy Ratings are a recognised and straightforward way of assessing the thermal performance of window and door systems when fitted with a quality double glazed unit.

Our sales advisor will be able to guide and advise you on the optimum combination for your budget and your home.



LOCKMASTER®



THE WORLD'S MOST STYLISH WINDOW FROM THE WORLD'S MOST ADVANCED PVC-U WINDOW AND DOOR MANUFACTURER

The windows and doors featured in this brochure are extruded, machined and assembled all on one site - here in the UK.

The manufacturing process is the most advanced in the world, using the very latest computer controlled, precision machinery.

Each window and door is individually created to your order, and thoroughly inspected before dispatch.

Your approved installer is qualified and experienced in all aspects of installation and will fit the product with the minimum amount of disruption with stunning results.



PVC-U WINDOWS AND DOORS HELPING TO REDUCE YOUR CARBON FOOTPRINT

Energy used for heating our homes is generating a massive 25% of all the carbon dioxide (CO₂) produced in the UK. CO₂ is almost certainly contributing to climate change. Insulating every part of your home is a valuable way of reducing your carbon footprint.

Fitting energy efficient windows and doors will go a long way to reducing this huge percentage and help reduce your heating bills.



A WINDOW & DOOR THAT CAN BE RECYCLED

The extrusions of our profiles are produced from a new generation of lead free compound using calcium/zinc and organic stabilisers, this material is regarded as non-toxic.

There is very little waste in our manufacturing processes - material from offcuts and machining, is recycled and reused.

PVC-U window and doors can be recycled at the end of their lifespan.

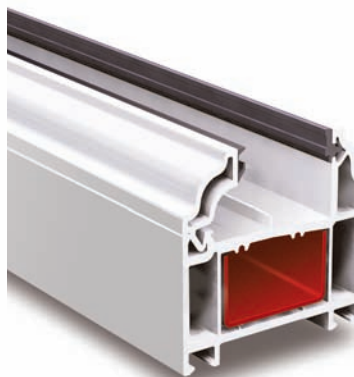


FULLY FEATURED PROFILE A WINDOW WITH CLASSICAL ORIGINS

The Fully Featured profile has a convex beading known as Ovolo, both on the exterior and interior.

The origins of this distinctive moulding date from classical Greek and Roman architecture and became popular on stone window mullions in England during the 16th century.

Traditionally known by carpenters as 'quarter round' creating fine shadow lines. It gives a very soft and pleasing look to any installation.



The Fully Featured profile and bead is co-extruded with twin, weatherproof gaskets designed to give low sight-lines, allowing maximum light through the glass surface.



OPTIONAL FINISHES AND SECURITY CHOICES

The stylish and ergonomic design of our handle range will ensure years of reliable, trouble free use. There is a range of colour options to suite any interior.



Our internally glazed windows are fitted with multi-point espagnolette locking as standard. *Optional shootbolt locking mechanism offers unprecedented security that consists of 2 high tensile brass bolts and a high strength centre deadbolt which lock into ultra strong composite, rust free keep plates.



Saracen Secure means all windows fitted with the optional shootbolt locks are guaranteed for 5 years for up to £1000, against being forced open. You simply register your installation with Saracen either on-line or by post within 14 days of the installation.



*OPTIONAL
CHOICES

ENTRANCE DOORS, FRENCH DOORS SLIDING PATIO DOORS - ALL MADE TO YOUR INDIVIDUAL REQUIREMENTS.

All doors are made to your individual order, designed with security and reliability in mind we only use the highest quality components available.

We manufacture your door using the worlds most advanced machinery to ensure precision for all components and assembly.

With security a priority you can choose a selection of options, including the very latest in locking, with hooklocks and anti-lift bars, combine this with anti-jemmy hinge protectors for the ultimate in high security PVC-U doors.

LOCKMASTER®



A SELECTION OF STYLES

Open up the outside world with our range of French doors, with the option of opening one or both doors you can bring your garden into your home, available opening inwards or outwards you can make the best possible use of your space.



Standard hinge



Flag hinges enhance the appearance of your door and offer micro adjustment in three directions.





OPTIONAL PROFILE FINISHES AND COLOURS

Choose a colour to suit your home, rosewood can help with the traditional appearance or the sleek and modern mellow oak finish doors really can change the look of your home.

If you like the look of the woodgrain finish on the outside of your doors but feel it wouldn't fit in with your internal decor you can now have the best of both worlds when our woodgrain-on-white range to allow you to have white on the inside of your home with either oak or rosewood to the external face.



A choice of three low threshold profiles will enhance and improve access to your property.



The new range of fully featured doors are more attractive than ever, the distinctive decorative moulding along with slim sightlines give these doors the slimmest possible appearance whilst maintaining the strength and security required for even the toughest environment.



With a range of modern and durable finishes available on our handle range you can ensure the stylish appearance of your doors lasts for years to come.



*OPTIONAL CHOICES

SECURITY IS HIGH PRIORITY WITH ANY INSTALLATION

All Entrance and French Doors are fitted with an extremely strong and effective rollercam locking mechanism as standard. An option of 2 or 4 hooklocks with anti-lift bolts can be added as featured below. Your installer can advise you on the most appropriate combination of security devices to suit your needs.

LOCKMASTER®



- Rollercams as standard for smoother operation and improved compression with improved weather sealing

- Toughened latch

- Top and bottom shootbolt extensions available as optional extra on all lock configurations

- Anti-lift bolts with each hook for enhanced security

- Multi point locking as standard on all units

- Centre bolt with anti-saw pins

- Hinge protection bolts can be added to the hinged side of any door, once closed these components add an incredibly strong anti-jemmy enhancement.



THE WORLD'S MOST STYLISH WINDOW MADE TO EXACTING STANDARDS

Not all windows and doors are the same. They may look similar but there can be huge variations in quality and features. All our products have the features highlighted here either as standard or as specified optional extras. Rest assured even the standard window or door still has in-depth quality and is built to last.

- Manufactured from a recyclable material
- 65mm multi chamber PVC-U profile
- Internally beaded for extra security
- 28mm sealed unit double glazing
- Ergonomic locking handles
- Galvanised steel reinforcement, to specification
- High quality EPDM external glazing gaskets
- Low sight line, twin gaskets on all internal beads
- Profile extruded from a new generation of compound using calcium/zinc and organic stabilisers, this material is regarded as non-toxic
- Friction stay hinge - stainless steel as standard
- Composite material used on on shootbolt locking
- Manufactured to your specifications in the UK

MAINTENANCE

It is recommended that maintenance on doors and/or windows is carried at least twice a year. A light machine oil should be applied to hinges and all parts of the locking mechanism



