



## Innovative Design and Superior Performance

---

ALUMINIUM AND UPVC WINDOWS • DOORS • ROOF LANTERNS

# WELCOME

Welcome to the most stylish, advanced and high-performing uPVC and Aluminium window and door range currently available in the UK market.

When it comes to selecting the best products to enhance and protect your home, you want to be sure you're making the right choice. Beautiful, stylish, expertly made, our collection made up of uPVC Flush, Sculptured and Chamfered Sash windows and doors, Composite doors, elegant Aluminium doors, and the stunning Residence Collection strike the perfect balance between energy efficiency, security and design.

Factory and post consumer waste (your old windows and doors) are broken down and separated into their component parts for recycling. Many products may contain recycled materials as glass, uPVC and aluminium can be reused many times. The outer surface of uPVC is always virgin material though to ensure colour accuracy.

When it comes to installation, we've got you covered! Our Installers have been rigorously trained, assessed and vetted to give you complete peace of mind, and ensure your project is completed to the very highest standards.

We hope this brochure gives you plenty of inspiration for your next home improvement project – and if you'd like any more information, please don't hesitate to give your Installer a call.



# CONTENTS

## 04 WINDOW STYLES

## 06 THERMAL EFFICIENCY

Your uPVC window explained

## 08 CASEMENT WINDOWS

System 10 and Rustique uPVC Casement windows

## 10 TIMELESS COLLECTION

Premium flush sash timber alternative windows and doors

## 12 uPVC PATIO DOORS

French, patio doors and entrance doors

## 14 uPVC COLOUR COLLECTION

## 16 LIFT & SLIDE DOORS

Aluminium sliding doors by Designer Range

## 18 BI-FOLD DOORS

Aluminium bi-folds by Designer Range

## 20 DESIGNER RANGE CLASSIC

Heritage style aluminium windows and doors

## 22 DESIGNER RANGE PRESTIGE

Aluminium windows and doors

## 24 ROOF LANTERNS

Aluminium roof lanterns by Designer Range

## 26 GALLERY 44

Our premium composite door collection

## 29 KUBU SMART TECHNOLOGY

High security smart sensors for your doors and windows

## 30 RESIDENCE COLLECTION

Timber alternative uPVC windows and doors

## 32 ENERGY RATINGS

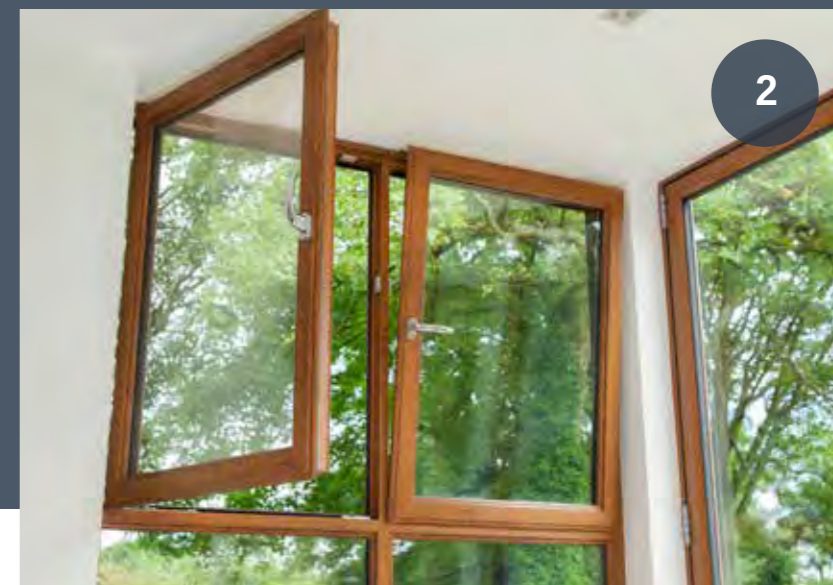
## 34 SUSTAINABILITY

Our commitment to sustainability



# WINDOW STYLES

to suit every type of home



## Window Styles | Leaded and Georgian

The design of your windows and doors have a big impact on the overall appearance of your home. Whatever the age of your property, the original windows and doors were designed to harmonise with it. So it's important to consider what will look right for the building when you replace them. The right design and look can preserve or enhance the value of your home.



Square Leaded



Single Georgian Bars



Georgian Bars in Fanlight



Astragal/ Georgian Bars

\*This image is for illustration purposes only. For further details on Georgian or Astragal Bar options please ask your Installer.

## Window Styles | Sightlines

Good window design extends to the symmetry of window sightlines. Equal sightlines add balance and harmony - creating the perfect stylish finish.



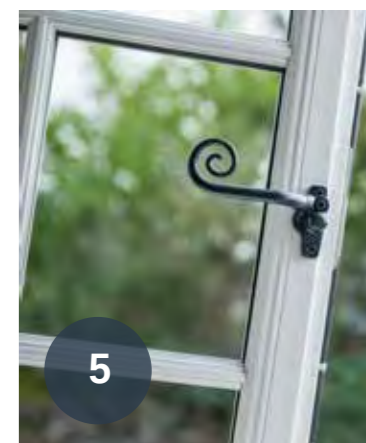
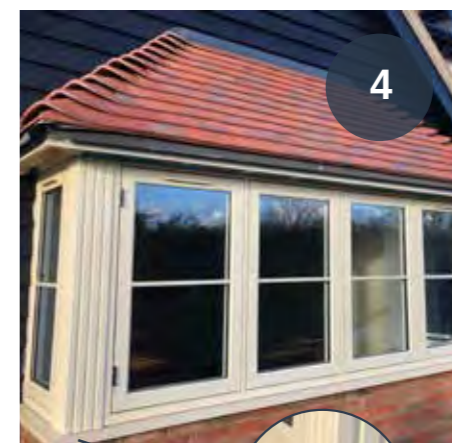
Equal Sightlines



Unequal Sightlines

## Window Layouts

Whether you are looking to replicate the layout of your existing windows or want to change them to give your home a different look and feel, we offer a range wide range of styles.



- 1 Georgian Bar**  
Bars placed between the glass in the sealed unit add character to your window.
- 2 Tilt and Turn**  
Tilts inwards for air ventilation or fully open like a door for easy cleaning.
- 3 Bow Bay**  
Featuring Georgian Bars  
These windows generally have one large picture window with a smaller window on either side.



- 4 Square Box Bay**  
Square Box Bay featuring seamless Graf weld for smooth finish on bay cill.
- 5 Astragal Bar**  
Bars positioned on the glass replicating the look of individual panes for a timber look effect.



**0.9**  
U-VALUE W/(M2K)  
TRIPLE GLAZED

**1.3**  
U-VALUE W/(M2K)  
DOUBLE GLAZED

**10**  
YEAR  
GUARANTEE

# WINDOW FEATURES

## A+ THERMAL RATING

Compared with aluminium or wood, uPVC windows are low maintenance, have better insulation values and are able to reduce energy and heating costs.

## REDUCED HEAT LOSS

Warm edge spacers improve thermal efficiency at the glass's edge. 80% of a double glazed window's energy loss occurs here.

## IMPROVED DRAINAGE PATH

Designed to allow water to run off the window into the frame and then drain out from the frame, reducing moisture in the home.

## MULTI-CHAMBER OUTER FRAME

Our windows feature a multi-chamber outer frame design, meticulously crafted to enhance strength, thermal insulation and acoustic performance.

## WINDOWS MADE FROM WINDOWS

On average, 23% of the uPVC in our windows is recycled material. Brand new white pellets are formed from recycled content to create new pristine windows supporting the closed loop recycling system.

## HIGH SPECIFICATION WEATHER SEALS

Constructed to absorb noise pollution. Impervious to rot, mould, mildew, UV radiation and ozone infiltration for longer lifespan of the window.

## PREMIUM FINISH

Renowned for quality, the surface finish requires little or no maintenance ensuring a long-lasting pristine appearance.



**Chamfered** | System 10



**Decorative** | Rustique



**Flush Sash** | Timeless

# CASEMENT WINDOWS



RUSTIQUE CASEMENT WINDOW

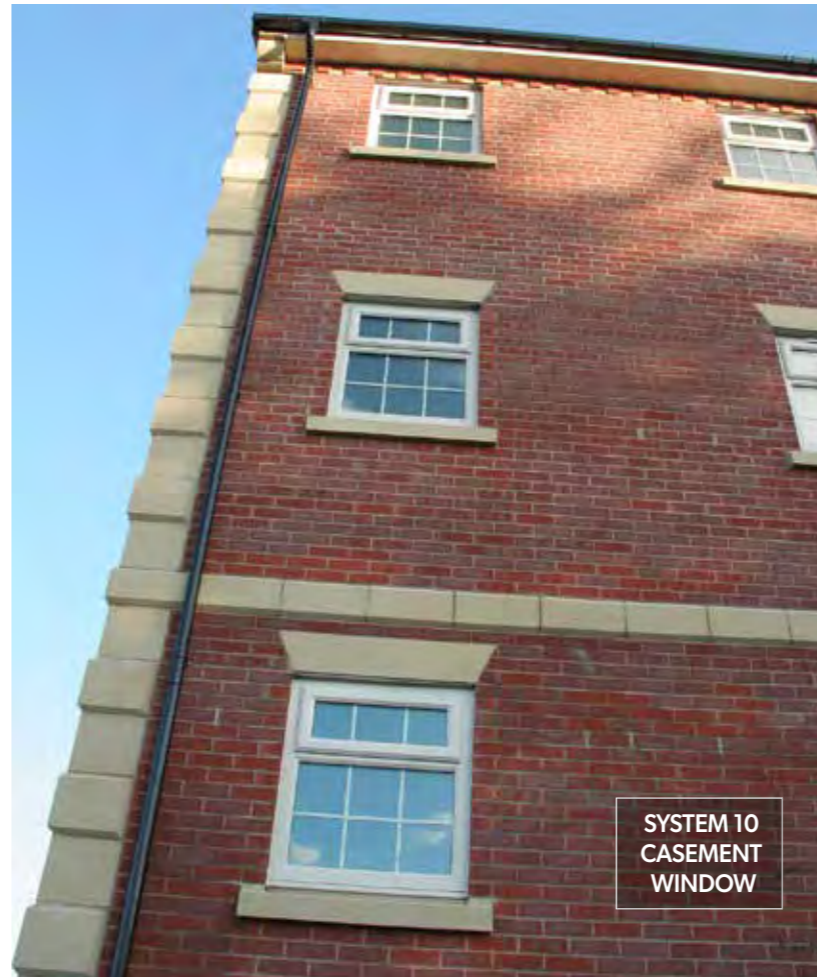
**Casement windows are the most popular style and come in System 10 or Rustique profiles.**

Casement windows are the most popular design, offering a multitude of style and colour options. Technical features such as 5 thermal chambers, energy efficient glass designed to minimise heat loss, and robust weather seals, all help to reduce the energy required to heat your home as well as minimising noise pollution.



**Our beautiful Rustique and System 10 uPVC windows feature outward opening sashes, which stand proud of the face of the window frame and are the more typical style found in houses today.**

System 10 is a chamfered finish, whilst Rustique is a sculptured finish. Select the style which best suits your property.



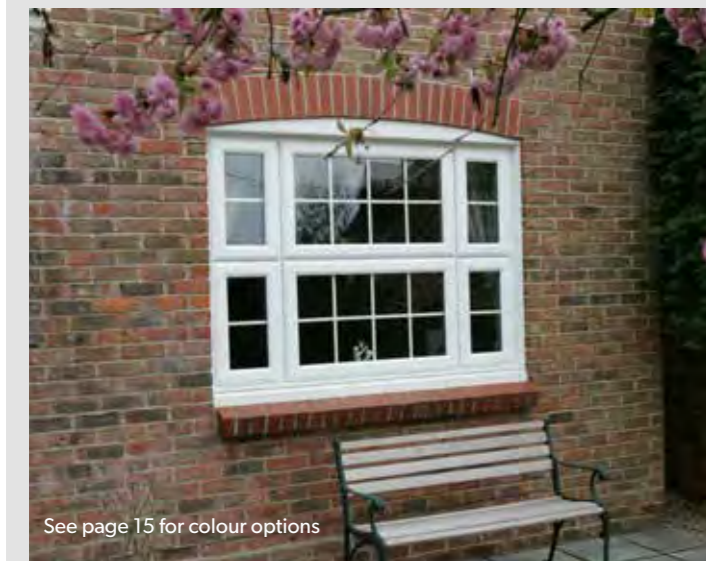
SYSTEM 10 CASEMENT WINDOW

**Our Rustique and System 10 windows and doors combine the elegance and style of traditional timber with all the benefits of uPVC.**

This range is ideal for those who wish to add or improve the period features of their homes. Its unique, unrivalled aesthetic appeal makes this range the most attractive suite of windows and doors on the market today.

French Doors and Entrance Doors are available in the same colours to match your windows. Choose door frame profiles in the same style too, for a seamless finish.

- ✓ Exquisite Georgian bar option
- ✓ Tilt and Turn options
- ✓ Night vent facility
- ✓ High security locks for total peace of mind
- ✓ Contains recycled uPVC for sustainability
- ✓ 32mm triple glazing option
- ✓ Available in a wide range of hand-picked woodgrain finishes
- ✓ French Doors and Entrance Doors to match your colour choice



See page 15 for colour options



UP TO A+ ENERGY RATED

\*A+ is achievable in Rustique, using a 56mm outerframe and thermal reinforcing

# TIMELESS WINDOW & DOOR COLLECTION

## PREMIUM FLUSH SASH TIMBER ALTERNATIVE

The sash sits flush with the external frame to replicate the appearance of traditional timber windows. Modern technology delivers all the security and thermal efficiency benefits, and the appearance is further enhanced by durable, maintenance free finishes in either smooth or authentic wood grain effects.

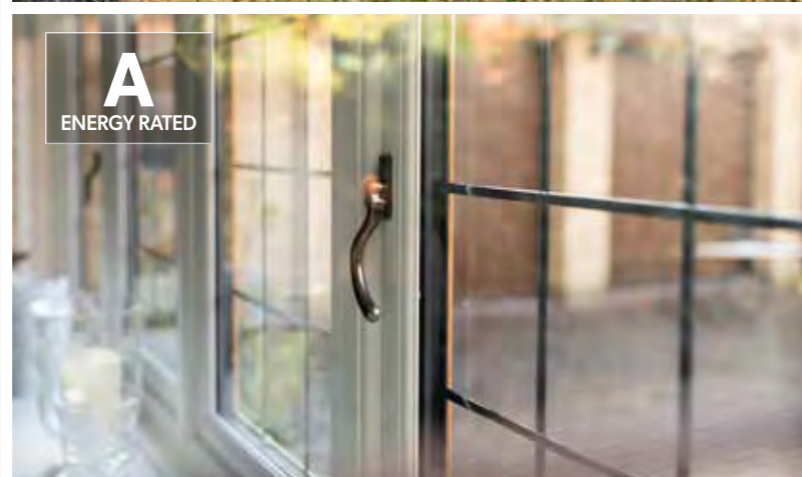
Choose traditional looking hardware or modern styles depending on the look you want to create in your home.

## AUTHENTIC STYLE

The newly unveiled Timeless Flush Sash window is reminiscent of early 19th Century timber windows and is ideal for heritage homes, particularly in conservation areas, where authentic looks are all important.

- ✓ Sleek slimline frames
- ✓ Traditional Ironmongery options
- ✓ Dummy peg stay option
- ✓ Exquisite Georgian bar option
- ✓ Night vent facility
- ✓ High security handles and locks for your peace of mind
- ✓ Sealed unit for increased energy efficiency
- ✓ Double or 28mm triple glazing available
- ✓ Low maintenance uPVC frames
- ✓ Available in a wide range of hand-picked woodgrain finishes

See page 15 for colour options



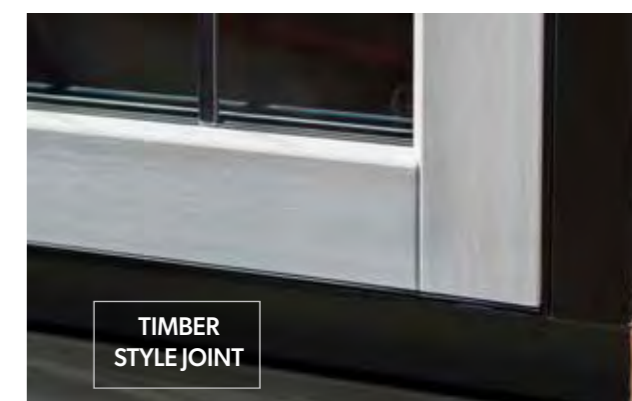
## CHOOSE CLASSIC WELD OR OUR TIMBER STYLE JOINT

Unlike other flush systems, the Timeless Flush Sash is available in two jointing options, Classic Mitre Welded joint and the Timeless Timber Style joint.

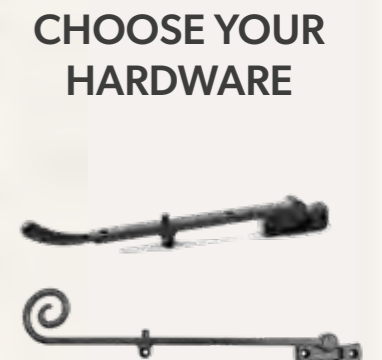
Timber style joints are crafted using Timberweld technology delivering superb technical performance and beautiful aesthetics.

Classic Mitre Welded joints give a contemporary and modern twist to this heritage style.

The corners are precision welded so that the join is practically seamless.



## 5 CLASSIC & MODERN FINISHES



## CHOOSE YOUR HARDWARE

Matching traditional peg stays are available to create a perfectly matching Timeless window. Available in matching colours as above.



## UPVC FRENCH, ENTRANCE AND PATIO DOORS



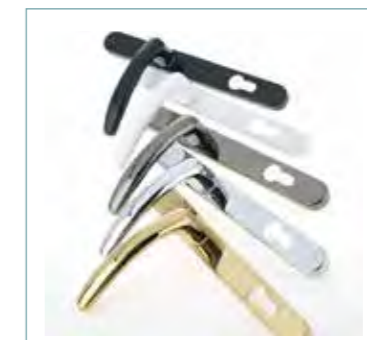
Our uPVC doors are available in the same colours as the windows. Choose the door style to suit your home and lifestyle, from French Doors for smaller openings or Patio Doors if you want to open up a room and bring the outdoors in.

### Key Features

- ✓ High security multi-point locking
- ✓ Energy efficient design
- ✓ Triple glazing options\*\*
- ✓ Choose from a wide range of styles and colour options

\* Gold and chrome curved handles are available as marine grade  
 \*\* Triple glazing on patio doors is 28mm

See page 15 for colour options.



# SECURITY YOU CAN RELY ON

The KlawLoc bi-directional window lock is engineered with safety in mind. This lock seamlessly combines innovation and reliability, with accreditations such as PAS24 and Secure By Design, it stands as a testament to its impenetrable design, ensuring your peace of mind. Tested rigorously to withstand 50,000 cycles, it promises a long-term solution to safeguard your home.

## KlawLoc works with Kubu.

With real-time updates on your home's security status, this synergy of technology offers unparalleled control and insight, granting you the power to protect what matters most with ease and confidence.

In an era where security is paramount, the bi-directional window lock

stands as a beacon of trust and innovation. With a 10-year guarantee backing its reliability, it not only fortifies your windows but also your confidence in your home's safety. Seamlessly blending cutting-edge technology with tried-and-tested durability, this lock doesn't just secure your home - it grants you peace of mind and control, ushering in a new era of smart, secure living.

**Ask your Installer about the Klawloc upgrade option.**



**KlawLoc**



**£5000 CASH BACK**  
ULTION LOCK GUARANTEE

If an intruder snaps Ultion and breaks into your home we'll pay you £5000.

# UPVC WINDOWS AND DOORS COLOUR COLLECTION

## Heritage Colour Collection

Woodgrain outside, White Grain inside

|                    |                    |                    |                         |
|--------------------|--------------------|--------------------|-------------------------|
| WHITE GRAIN        | ANTHRACITE SMOOTH  | AGATE GREY         | PEBBLE GREY             |
| WHITE GRAIN INSIDE | WHITE GRAIN INSIDE | WHITE GRAIN INSIDE | WHITE GRAIN INSIDE      |
| IRISH OAK          | BLACK              | CREAM              | ANTHRACITE GREY GRAINED |
| WHITE GRAIN INSIDE | WHITE GRAIN INSIDE | WHITE GRAIN INSIDE | WHITE GRAIN INSIDE      |

Colour both sides

|                   |                   |                  |                         |
|-------------------|-------------------|------------------|-------------------------|
| ROSEWOOD          | GOLDEN OAK        | IRISH OAK        | AGATE GREY              |
| ROSEWOOD INSIDE   | GOLDEN OAK INSIDE | IRISH OAK INSIDE | AGATE GREY INSIDE       |
| ANTHRACITE SMOOTH | BLACK             | CREAM            | SPECTRAL GREY 7016      |
| A/SMOOTH INSIDE   | BLACK INSIDE      | CREAM INSIDE     | SG 7016 INSIDE          |
|                   |                   |                  | ANTHRACITE GREY GRAINED |
|                   |                   |                  | A/GREY GRAINED INSIDE   |

## Standard Colours

Woodgrain outside, White Smooth inside

|                     |                     |                     |                         |                     |                     |                     |                     |                     |
|---------------------|---------------------|---------------------|-------------------------|---------------------|---------------------|---------------------|---------------------|---------------------|
| WHITE SMOOTH        | ROSEWOOD            | GOLDEN OAK          | ANTHRACITE GREY GRAINED | BASALT              | SPECTRAL GREY 7016  | BLACK               | CREAM               | ANTHRACITE SMOOTH   |
| WHITE SMOOTH INSIDE | WHITE SMOOTH INSIDE | WHITE SMOOTH INSIDE | WHITE SMOOTH INSIDE     | WHITE SMOOTH INSIDE | WHITE SMOOTH INSIDE | WHITE SMOOTH INSIDE | WHITE SMOOTH INSIDE | WHITE SMOOTH INSIDE |
| AGATE GREY          | PEBBLE GREY         | SILVER GREY         | CHARTWELL GREEN         | SLATE GREY          |                     |                     |                     |                     |
| WHITE SMOOTH INSIDE | WHITE SMOOTH INSIDE | WHITE SMOOTH INSIDE | WHITE SMOOTH INSIDE     | WHITE SMOOTH INSIDE |                     |                     |                     |                     |

The colours shown here represent colour options available for the System 10, Rustique, & Timeless windows and doors.

\*Please note that the Black profile we supply is Beck Brown. This is a very dark colour and as close to black as can be manufactured. Ask your Installer if you require further details.





## DESIGNER RANGE ALUMINIUM LIFT & SLIDE DOORS

### SLIM, MULTI-TRACK ALUMINIUM LIFT AND SLIDE.

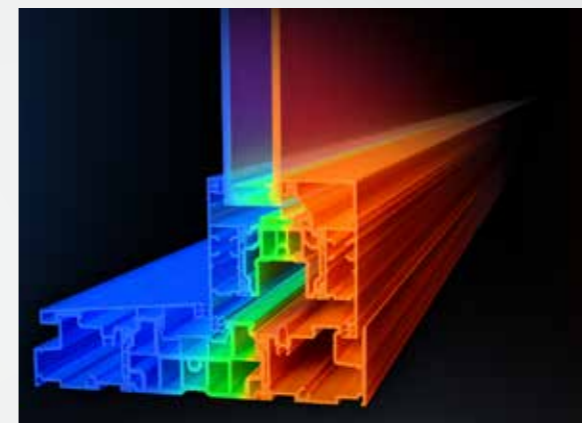
Slim aesthetics maximise the glass area

#### KEY FEATURES

- Part L compliant
- 80mm Interlock as standard with 52mm Slim Interlock available on Twin Track configurations
- Slim sightlines - 106mm frame to sash up to 31% slimmer than market competitors
- High security interlocks to stop intruders, Rated to 4.5kn
- Dual and triple track options up to 6.5m x 2.5m
- Low ramp threshold available on twin track



See page 23 for colour options.



Thermlock® technology delivers  
superb thermal efficiency



ULTION

DESIGNER RANGE  
ALUMINIUM



## DESIGNER RANGE ALUMINIUM BI-FOLD DOORS

### THE NEW DESIGNER RANGE PRESTIGE BI-FOLD COMBINES STYLE, SECURITY, INNOVATION AND SUSTAINABILITY.

British designed and made to deliver on style and sustainability for the modern home. Thermallock® technology ensures greater thermal efficiency than other aluminium bi-folds.

Choose the stepped sash option and Georgian bars to replicate the traditional heritage looks found in old Critall or steel windows, but with all the benefits of a modern door system. A choice of hardware allows you to choose either colour matching, white, black, chrome, grey, satin or gold. Hinges and D handles can be white, black or grey.

The Ultion 3 star cylinder gives you peace of mind and is backed up with a £5k security guarantee.

ULTION



DESIGNER RANGE  
ALUMINIUM

See page 23 for colour options.

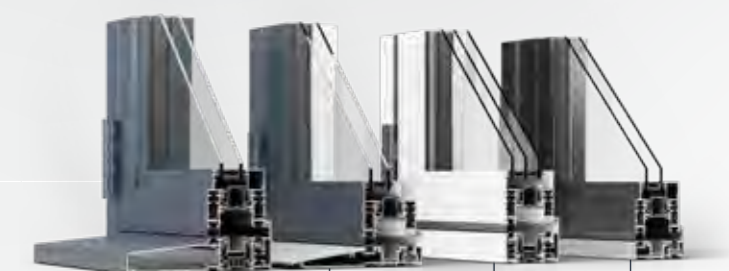


### KEY FEATURES AND BENEFITS

- U-value as low as 1.0W/(m2k) with triple glazing, 1.4W/(m2k) with double glazing
- 10 year guarantee
- Made in Britain using Welsh sourced aluminium
- Designed to minimise environmental impact from waste through to energy use
- Up to 7 pane configurations
- Multi-point locking
- Anti-bump, anti-snap and drill cylinders
- High security interlocks
- Single and French door options
- Colour matching hardware options
- Consistent, slim 138mm sash to sash sightlines

- Georgian bar and stepped sash option for a heritage look
- Future proofed to meet new Part L Building Regulations

#### 4 Fully Weatherproof Threshold Options



STEPPED SASH Stepped Sash Integral Cill    CONTEMPORARY WITH CILL Low Ramp Threshold    CONTEMPORARY Standard Outerframe Threshold    STEPPED Low Threshold

# DESIGNER RANGE CLASSIC HERITAGE DOOR



## STEEL LOOK DOOR WITH STUNNING AESTHETICS

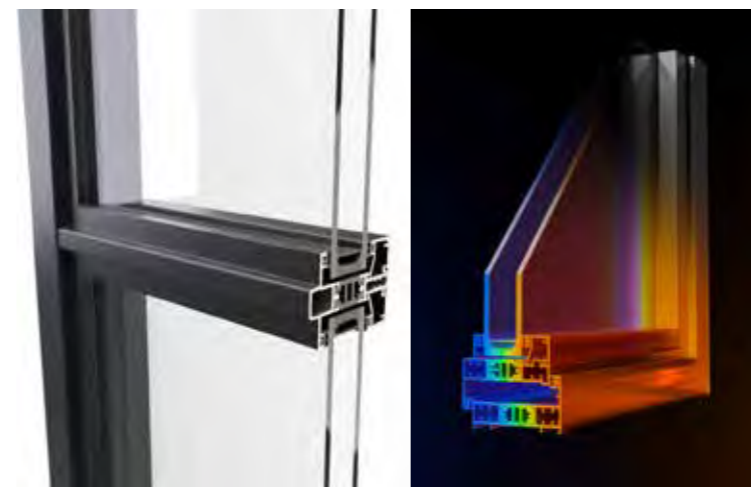
- Period inspired lock box design
- Advanced Thermlock® technology for optimal insulation
- Single or French door options
- Part L compliant
- Thermally efficient with U Value of 1.4

See page 23 for colour options.



### DESIGN VERSATILITY

Available as either a single entrance door or a French door the Designer Range Classic Heritage Door is remarkably versatile, effortlessly adapting to various architectural styles, from traditional period homes to modern properties. The door's design flexibility, enhanced by dummy transom bars and a wide colour palette, ensures it complements and enriches the unique character of any home.



Thermlock®

### THERMLOCK® TECHNOLOGY

This multi-chamber design acts as a robust thermal break, synergising with high-performance glazing to achieve exemplary thermal efficiency. This ensures homeowners enjoy a warm, energy-efficient living space, shielded from the UK's often challenging weather.



### PERIOD INSPIRED LOCKBOX DESIGN

A pocket feature to the interior and exterior of the lockbox provides a unique heritage look.

*Handle illustrated is an upgrade option, ask your Installer for more details.*



# DESIGNER RANGE PRESTIGE WINDOWS AND DOORS

## TRANSFORM YOUR HOME WITH OUR STYLISH ALUMINIUM WINDOWS AND DOORS

Choosing the right aluminium windows for your home is an important decision. An investment that makes a real difference to how warm and secure you feel, as well as improving the look of your property. That is why we have carefully designed the Prestige window and door system to combine stylish looks

with the latest technical innovation. Building on years of experience, we've incorporated many unique features to create an incredibly thermally efficient, secure system, with unparalleled aesthetic appeal, that's available in a wide range of colours.



Designed for discerning homeowners that aren't willing to compromise, the Prestige range is tailored for those who demand more for their homes.

Built around our innovative Thermavic® multi-chamber thermal break, we use a patented, strong and durable construction method, enabling us to hand tune each corner, ensuring every single window and door is finished to the highest standards.



Each Prestige installation is individually tailored to the exact requirements of your property. A range of different outer frame sizes accommodate different plaster lines and window reveals - ensuring a perfect, neat finish.

Our versatile 72 - 80mm wide system is available in casement, French and fixed windows and has been designed to be sympathetic to the modern trend for light, airy interiors. Using slim sashes allows more light to flood into your home, helping create that important sense of space and tranquillity.

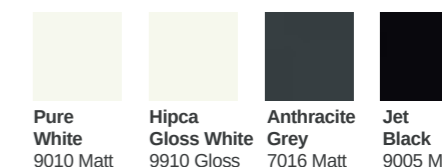


## EXCEPTIONAL THERMAL PERFORMANCE COMBINED WITH REFINED LOOKS

Prestige combines aluminium's clean lines with exceptional thermal performance.

Our innovative Thermavic® multi-chamber thermal design, hidden away inside each window and door, helps keep you and your property well insulated against the worst of the UK weather. This closed-cell, insulating chamber acts as a thermal break and works in conjunction with high performance glazing to create class leading thermal performance, far superior to traditional polyamide thermal breaks. Designer Range's cills also feature this same technology coupled with innovative in-built weather sealing keeping draughts and rain safely outside.

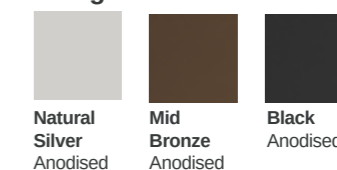
### Traditional Colours



### Character Premium Colours



### Paragon Anodised Colours





## DESIGNER RANGE ALUMINIUM LANTERN ROOFS

### SUSTAINABLE, STYLISH AND SECURE ROOF LANTERN



Fully thermally broken flush roof vents put this lantern ahead of the competition.

Designer Range Roof Lantern is a warmer, slimmer and much more secure roof lantern.

Thermalock® multi-chamber thermal technology helps keep heating bills low, while deep internal bars create a strong structure for spans up to 3.2m x 6m without tie bars.

Ultra-low line aesthetics give a stylish architectural appearance, enhanced with hard wearing powder-coated aluminium inside and out.



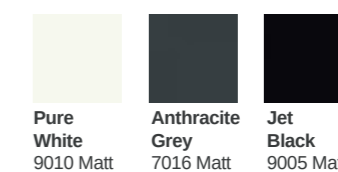
DESIGNER RANGE  
ALUMINIUM

### KEY FEATURES AND BENEFITS

- Thermalock® multi-chamber technology for thermal efficiency
- Ultra strong structure spans up to 3.2 x 6m without tie bars
- Ultra low line aesthetics for architectural styling
- Hardwearing powder coating inside and out
- Designed for security
- High security anti-tamper screws, anti-tamper glazing, security tape and glass lock
- Secure ridge end
- Laminate glass upgrade option
- U-value of 1.0W/(m<sup>2</sup>K) with 28mm glazing\*

- Maximum size of 2.4m x 6m at 25 degree pitch
- Weather rated for the whole of the UK
- Made with Welsh mined aluminium
- Designed to minimise waste
- Integrated LED lighting channel

#### Lantern Colours



Option of choosing a different colour inside.



## INTRODUCING THE GALLERY<sup>44</sup> COMPOSITE DOOR COLLECTION

Gallery 44 composite doors were designed with security and thermal efficiency in mind.

There is a style option to suit every home, from the wood grain effect Traditional or Contemporary doors, through to the smooth aluminium-look Urban range.

A wide choice of glazing styles allow you to further enhance your door and top light and sidelights are available for larger door openings.



### KEY FEATURES

- Grained or smooth finish
- Multi-point locks
- Insulated core for optimum thermal performance
- Hard wearing GRP coating requires almost no maintenance
- Secure robust design for peace of mind



Carnoustie (Agate Grey)  
Majestic Glazing



Troon (Victory Blue)  
Sycamore Glazing



Farmhouse Sunningdale (Nimbus)  
Cameo Glazing



Farmhouse Belfry (White)  
Bullion Glazing



# GALLERY<sup>44</sup>

Our Composite Door Collection is a complete range of thermally efficient composite doors manufactured to the highest quality standards. Choose from Traditional or Contemporary Styles to best suit your home.

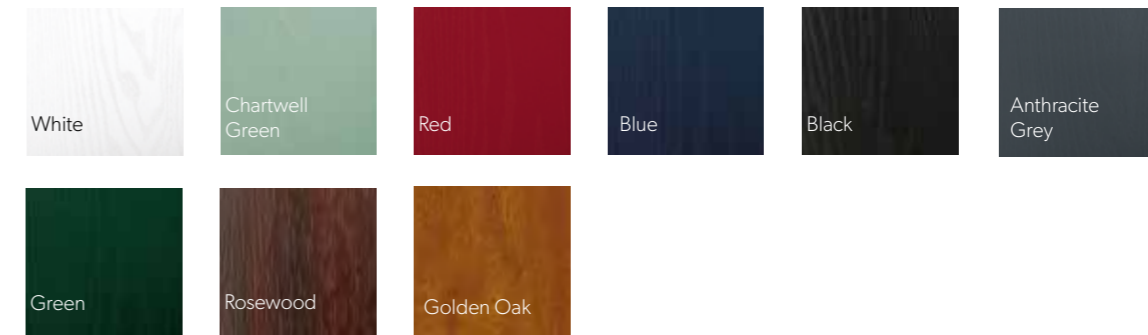
We can also offer toplights and sidelights to accompany your door when required in either a matching composite side panel or glass options.

For disabled access we offer a Building Regulations Part M compliant aluminium threshold.

# GALLERY<sup>44</sup>

## COMPOSITE DOOR COLOUR COLLECTION

### STANDARD COLOUR COLLECTION



### PREMIUM COLOUR COLLECTION



## How many times have you thought ... Have I locked my door?

We've all been there! With Kubu you'll never have to worry if your door is unlocked again.

Kubu uses smart and simple technology to monitor your lock in real time. You'll be able to check the status of your door no matter where you are, at any time of the day, right from the Kubu app on your phone.

ALL OUR DOORS ARE EQUIPPED FOR KUBU SMART – SENSOR TECHNOLOGY. Simply visit [www.kubu-home.com](http://www.kubu-home.com) once your door is fitted, and you will never have to worry about whether you remembered to lock your door again.

**With Kubu say goodbye to uncertainty and hello to peace-of-mind.**

*Kubu smart locks are only available on doors with lever/lever or lever/pad handles.*



## R9 The Timber Alternative

Residence 9 Timber Alternative windows are designed to suit properties from old to new and you can create them entirely to your own taste or to suit your property.

We offer a huge variety of colours, hardware options, and features such as Georgian bar and butt hinges, that will make your Residence 9 windows completely unique and add a touch of elegance to your home.

Timber style joints are crafted using Timberweld technology delivering superb technical performance and beautiful aesthetics



### Residence 9 Features & Benefits

- ✓ Ideal for use in cottages, town houses and period properties
- ✓ Accommodates 28mm double or 44mm triple glazing
- ✓ Every window can be customised including style colour and hardware
- ✓ Mechanical joints for a truly authentic looking window
- ✓ Traditional range of colours and wood effect finishes

### Residence 7 Features & Benefits

- ✓ A range of Monkey Tail or Pear Drop handles and stays
- ✓ Maintenance-free, no painting, sanding or staining required
- ✓ Flush Sash inside and out
- ✓ Personalised internal style, choose from one of our 3 styles of glazing bead options
- ✓ Butt Hinge option available as extra
- ✓ Traditional range of colours and wood effect finishes

## R7 Elegant Flush Sash

Elegantly flush sash exterior and interior gives the R7 its chic modern appearance and versatility to be used for both contemporary new builds and traditional British homes alike. All glass sightlines are perfectly equal providing symmetry for a timeless kerbside appeal.





# WINDOW ENERGY RATINGS

All our windows and doors are designed to maximise energy efficiency and many different components contribute to this, from the way the frames are constructed with thermal chambers to using the most efficient seals and gaskets to minimise heat loss. Most of our products can also be triple glazed.

Replacing old single glazed windows, or even older double glazed windows which may not have benefited from thermal chambers in the outer frame or spacer bars to maximise heat retention between the glass panes, can save money on your energy bills.

## Understanding U Values and Window Energy Ratings

There are 2 ways in which energy efficiency is measured on windows and doors: U Values and Window Energy Ratings.

→ U Values measure how much heat can transfer through the window in order to maintain the internal temperature. This means not letting too much heat in the summer, and not letting much heat out in the winter. The lower the U Value, the more thermally efficient the window is.

→ Window Energy Ratings are a measure of the efficiency of a window based on a formula calculating the positive and negative impacts of several factors:

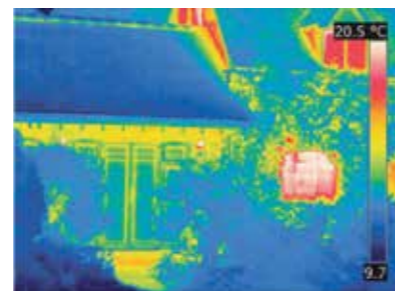
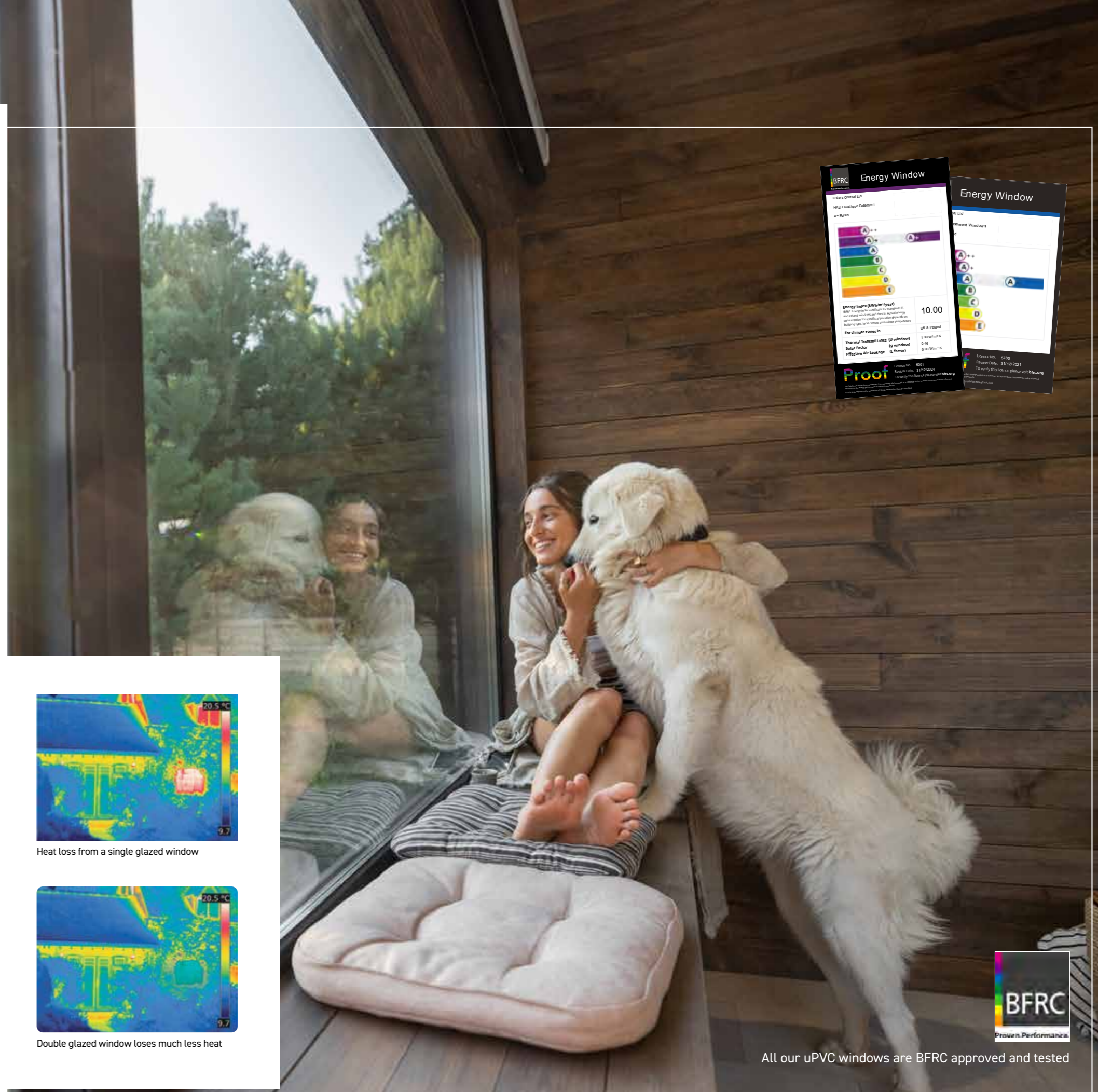
**Solar Gain**  
Heat in through the window (positive)

**Thermal Losses**  
Heat out through the window (negative)

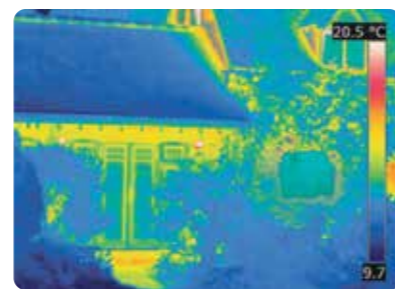
**Air Losses**  
Heat out through the window (negative)

**Look for higher ratings such as A or A+.**

**All our uPVC windows achieve a rating of A or higher.**



Heat loss from a single glazed window



Double glazed window loses much less heat

All our uPVC windows are BFR approved and tested

# OUR COMMITMENT TO SUSTAINABILITY

## UPVC



# ALUMINIUM

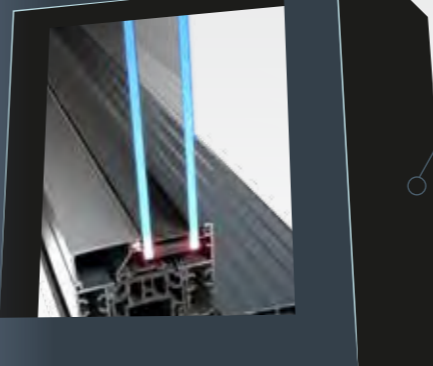
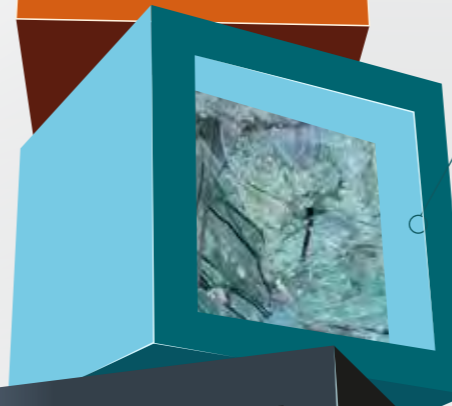
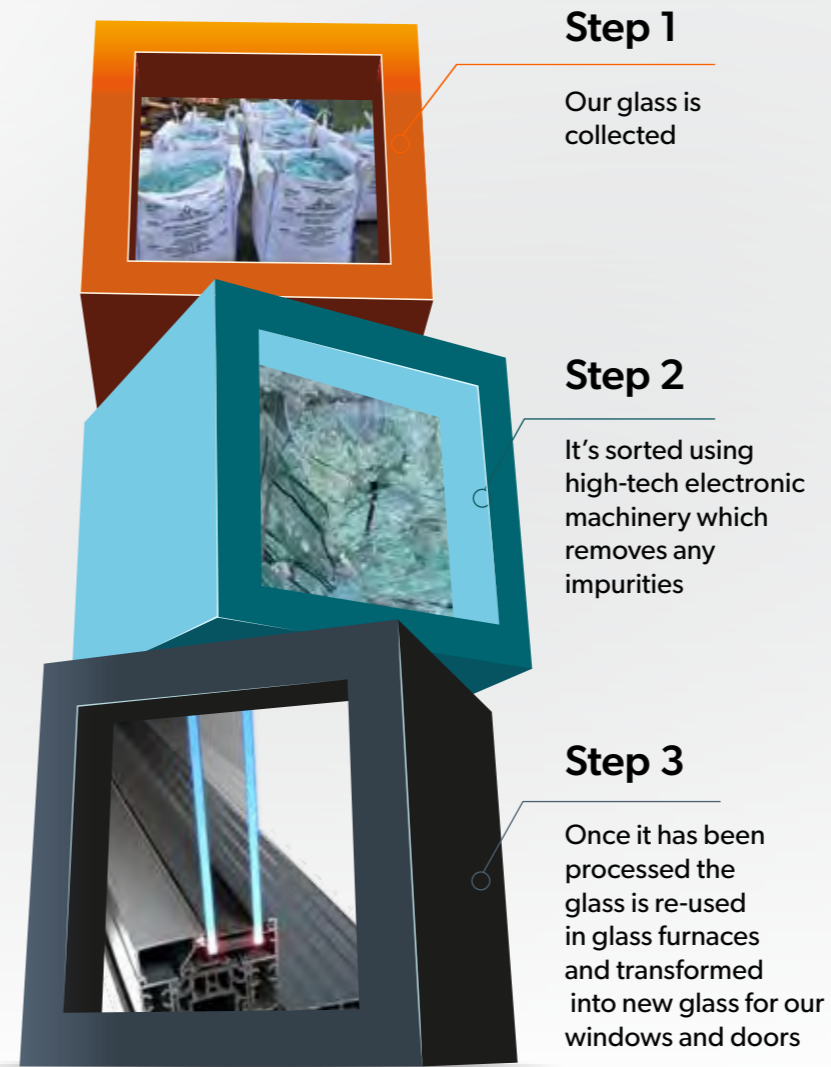
UK sourced and manufactured, aluminium is made from the most recycled and abundant metal in the Earth's crust.

Embracing innovation with sustainability, our aluminium is produced in an energy efficient extrusion plant using state-of-the-art SMS HYBRES press, achieving energy savings of up to 55% compared to traditional aluminium presses.

Designer Range, our aluminium supplier, recycle it's production waste back to the same Welsh aluminium foundry they source the majority of their aluminium logs from, supporting the UK's closed loop journey.

We not only make quality energy efficient windows and doors, creating warmer and more environmentally responsible homes, we are committed to reducing the impact this has on the environment.

## GLASS



### Energy Efficiency for Sustainability

Fitting A+ rated windows minimises your heat loss to reduce carbon emissions and ensures money spent on heating your home isn't wasted. Multi-chambered uPVC frames and argon gas filled double glazed units deliver the best possible thermal efficiency.

### The Future is Worth it

Sustainability is the future and our recycling programme minimises the environmental impact of our products and ensures that we recycle everything we can. As part of our sustainability mission, we have formed closed loop partnerships with our suppliers to ensure our recycled goods have an audited trail all the way back to the point of recycling. Our old windows and doors become new products within weeks of being removed from homes creating a brighter future for us all.

### Re-usable and recyclable for hundreds of years

Research has shown that 95% of 'post-consumer' or end-of-life uPVC windows can be recycled. The official product life for a uPVC window or door is up to 35 years (BRE) and they can be recycled up to 10 times meaning 350 years of re-use with minimal impact on the environment. Not only because they help reduce CO2 emissions, but uPVC is also a fully recyclable material and each year, tens of thousands of tonnes of uPVC is recycled, minimising the impact on landfill waste sites. In addition, the Flat Glass Sector's European recycling operations save almost 300,000 metric tonnes of raw materials per year, thereby avoiding 70,000 metric tonnes of CO2 emissions.



Our chosen manufacturer has secured the ISO 14001 accreditation, showcasing our commitment to sustainable manufacturing practices and ongoing environmental improvement efforts. This demonstrates our commitment to integrating environmental considerations into our operations and ensuring compliance with internationally recognised standards for environmental responsibility.



04/24 v3. KCD005 The content of this document, photographic reproduction and technical details remain the sole property of Listers, all rights reserved. It cannot be reproduced, in whole or in part, without explicit permission. Terms and conditions of sale apply, a copy of which is available on request.  
Created by Karma Design [www.karmadesignuk.com](http://www.karmadesignuk.com)